

FLOORTECH FT-30VC



Floortech offers you a complete range of innovative and powerful Dry, Wet & Dry vacuum cleaners - all designed to accommodate not only your most demanding professional cleaning needs, but also to match your specific level of requirements in terms of suction power, with features such as very low noise and high performance.



The **FLOORTECH** FT-30VC is a wet/dry professional vacuum cleaner. It is easy to use, robust and has optimal suction power.

FLOORTECH product family has a modular design with different tank capacities and motor quantities.

Tank capacity for FT-30VC is 30 liters and it has one motor. You can choose stainless steel tank or red plastic tank.

As standard, the machine is delivered with the following accessories: crevice tool, round dusting brush, wet pick-up tool and dry pick-up tool.

- Easy to use and service
- Optimal suction power
- Robust chassis
- Cable storage
- For wet or dry vacuum application
- Stainless steel tank

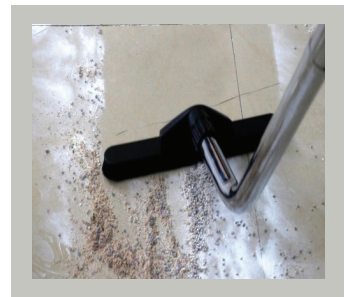
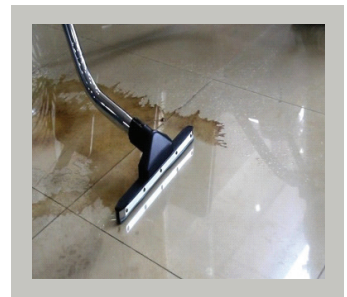
Product Description

Sea Clean 30L Wet And Dry Vacuum Cleaner

BRAND: FLOORTECH

Model: FT-30VC

1. FT-30VC Wet and dry vacuum cleaner is Made of Stainless Steel Tank, the tank is bump-proof and erosion-proof.
2. With a powerful silent motor, the vacuum cleaner has a specially strong suction.
3. Allowing a stable and handy use, a complete set of accessories are supplied with the vacuum cleaner.



Technical Specification

Model	: FT-30VC	Air flow rate	: 53L/S
Function	: Wet and dry	Vacuum suction	: 230mbar
Capacity	: 30L	Length of the cable	: 7m
Power	: 1000W	Hose diameter	: Ø36mm
Voltage	: 220V-240V	Packing	: 438×438×825mm
Height	: 76cm	Net weight	: 14.5kg
Tank diameter	: Ø345mm	Gross weight	: 16.2kg
Mode of cooling	: Circulating air cooling		

Standard accessories

Round nozzle Ø38 mm | Crevice nozzle Ø38 mm | Dry pick-up nozzle Ø38 mm | Wet pick-up nozzle
Suction tube assembly | Steel tube kit | Absorbing dust filter